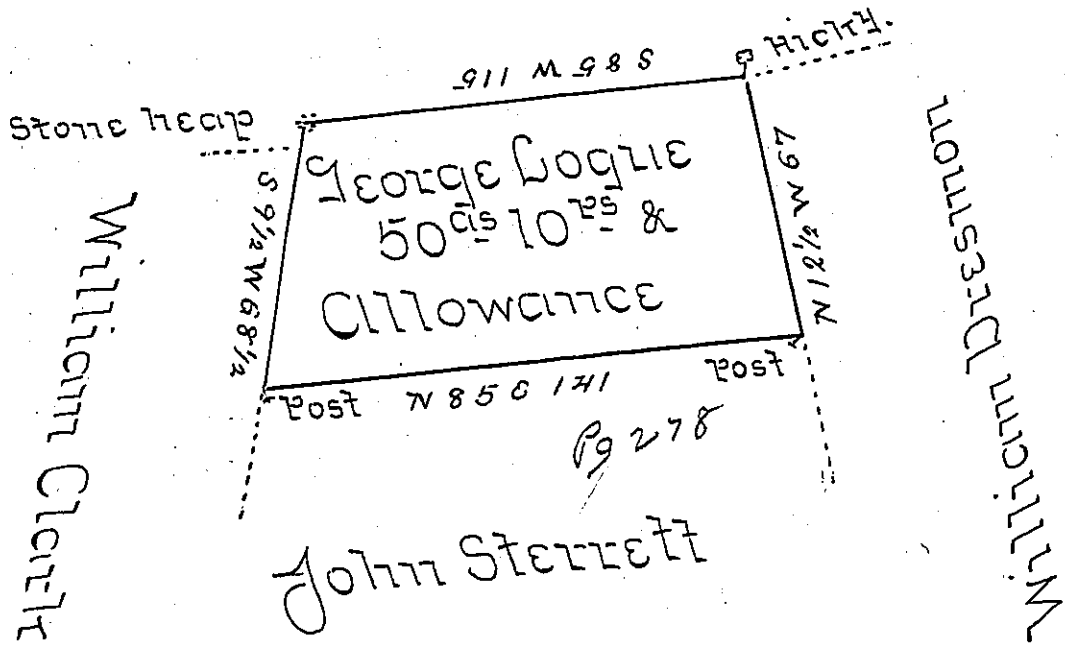


North Mountain



The Draught of a Tract of Land Situate in Middle-
 ton Township Cumberland County Containing
 Fifty Acres and ten Perches and Allowance of Six
 Percent for Roads &c Surveyed May 8th 1794 in
 pursuance of a Warrant granted to George Logie
 Dated the 1st Day of February 1794

By Sam^l Lyon D.S.

To Daniel Brodhead Esquire
 Surveyor General of Pennsylvania

IN TESTIMONY that the above is a copy of the original remaining on file in
 the Department of Internal Affairs of Pennsylvania, made
 conformably to an Act of Assembly approved the 16th day of
 February, 1833, I have hereunto set my Hand and caused
 the Seal of said Department to be affixed at Harrisburg,
 this Eleventh day of October 1905.

James D. Pennington
 Secretary of Internal Affairs.